

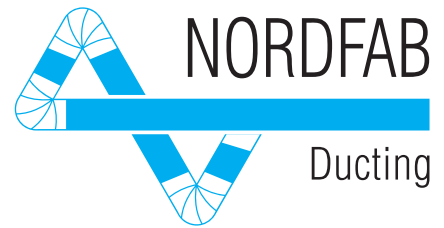
QFS

Oil Mist &

Cutting Fluid

Duct System
Product Catalogue

QF Sealed 18.1 English



The world's fastest ducting™

Nordfab QFS Sealed Duct

QF sealed ducting offers a complete range of diameters and accessories for easy-to-fix professional installations.

Manufactured from galvanised steel or stainless steel with laser welded seams, which have smoother internal surfaces and provide greatly enhanced leak resistance, Nordfab ducting offers an unbeatable solution for all general purpose dust extraction duties.

The Quick-Fit™ clip features a generously dimensioned sealing gasket held firmly in place by positive over-centre clamping action over the rolled collars at the duct ends to be joined. For added security, a locking pin may be inserted.

All bends, branches, reducers, and other items with joints or collars are epoxy caulked. And when clipping the ductwork together, an additional nitrile gasket is placed between the parts to avoid leakage.



Oil Mist Health Hazards & Safety Risks

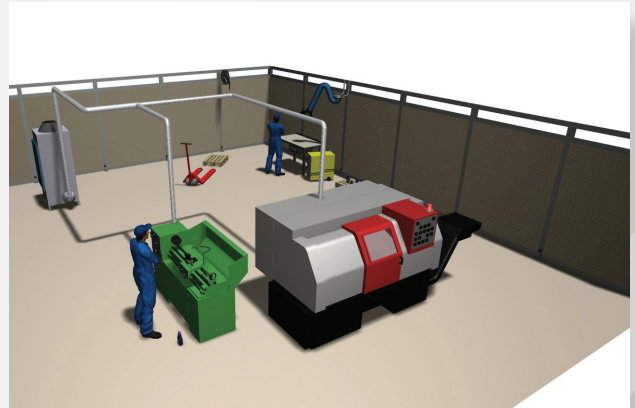
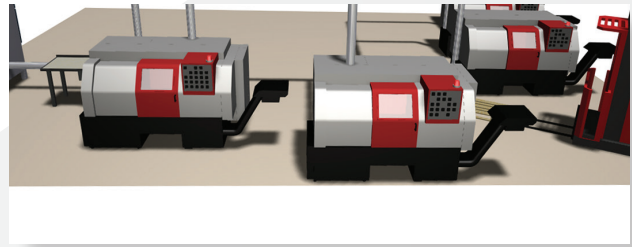
- Respiratory ailments
- Eczema and other skin conditions
- Increased risk of falls and related accidents
- Pollution of general ventilation system
- Damage to sensitive electronics
- Creates dirty environment

Advantages for using our oil mist and cutting fluid duct system

- QF Sealed Ducting for fast installation with no special tools, no painting, flexible working
- Easy to assemble installation components
- Neat slip duct connections to adapt and adjust ducting onsite during installation
- Laser welded straight ducts for smoother surface and enhanced leak resistance
- Prevent leakage on the floor, decreases slippery surfaces
- Easy to extend or take apart completely for cleaning, reconfiguring or relocation
- Full range of accessories and installation components
- Adapters available to connect to and extend all other duct systems
- All you need from one comprehensive, tried and tested range
- Stainless steel also available

Who Uses Sealed Duct?

- Steel mills
- Rolling mills
- Metalworking
 - Turning
 - Cutting
 - Milling
 - Grinding
 - Drilling
- Rubber and plastic industry
- Hardening and heat treating industry
- Automotive industry



Sealing Joints Between Sealed Ducts

Nordfab's Oil Mist Gasket, combined with the gasket inside our QF clamps, provides dual protection against leakage where ducts are joined.



1

Wipe rolled edge of duct with clean cloth. Then apply a high tack gasket adhesive per the manufacturer's instructions. High tack gasket adhesives can be

purchased locally at industrial or automotive suppliers in either aerosol spray or brushable formulations.



2

Carefully place the gasket along the rolled edge of the part, being careful to avoid kinks or voids. Only one gasket is needed per joint.



3

Join the gasketed end of the pipe to a non-gasketed end of the next part in the ducting run using a standard QF clamp.

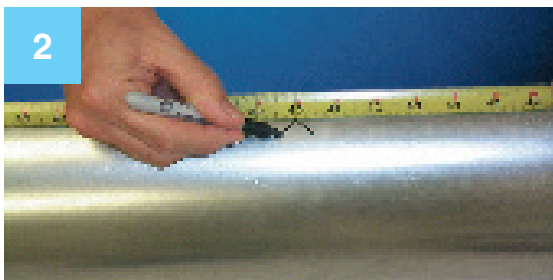
NOTE: When dismantling ducting, always replace the gasket.

Slip Duct for Oil Mist

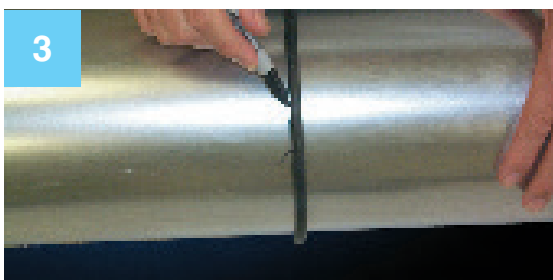
Nordfab's Slip Duct is an important component as it allows you to quickly adjust the length of your duct run.



Measure distance to be spanned.



Mark distance to be spanned less 100 mm.



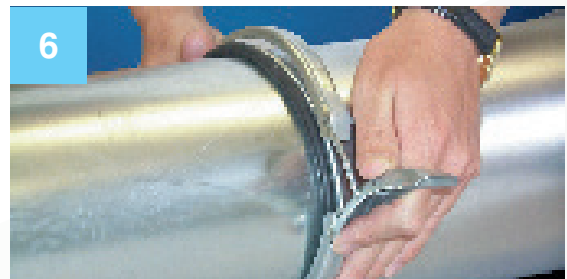
Use O-ring provided and mark for cut.



Cut the duct.



Place Slip Duct O-ring on the cut duct, then add the Oil Mist O-ring (which has a smaller thickness), and slide a Slip Duct over the cut end. Seat the Oil Mist O-ring evenly and firmly against the rolled metal edge of the Slip Duct. Then position the Slip Duct O-ring firmly against the Oil Mist O-ring.



Snap QF clip over the two O-rings and one end of the slip duct.



Finished connection with the slip duct.

Installation Guidance

It is recommended that QFS ductwork is installed with a 1° to 3° slope angled back towards the point of extraction. Incorrectly installed ductwork may cause leakage on to the plant floor or equipment, creating hazards for workers or even damage to machinery. To reduce the possibility of leakage, consider using outside expertise when designing and balancing your duct system, ensuring that the duct is installed correctly and minimising risk.

Sizing Nordfab Ducting Systems

Nordfab offers assistance to customers who have never designed a ducting system. We can assist you with determining the correct duct size and configuration for optimal air flow. Please call your local representative for assistance.

Using the Air Volume Chart

A recommendation when conveying air contaminated with oil, oil mist or / and cutting fluids is to maintain a speed in the duct between 10-15 m/s.

Range of duct air flow volumes m³/h

Ø mm	10 m/s	12 m/s	15 m/s	18 m/s	20 m/s	22 m/s	25 m/s	27 m/s	29 m/s	31 m/s
80	181	217	271	326	362	398	452	489	525	561
100	283	339	424	509	566	622	707	763	820	877
125	442	530	663	795	884	972	1105	1193	1281	1370
140	554	665	831	998	1108	1219	1385	1496	1607	1718
150	636	763	954	1145	1272	1400	1590	1718	1845	1972
160	724	869	1086	1303	1448	1592	1810	1954	2099	2244
180	916	1099	1374	1649	1832	2015	2290	2473	2657	2840
200	1131	1357	1697	2036	2262	2488	2827	3054	3280	3506
224	1419	1702	2128	2554	2837	3121	3547	3831	4114	4398
250	1767	2121	2651	3181	3534	3888	4418	4771	5125	5478
300	2545	3054	3817	4580	5089	5598	6362	6871	7380	7889
315	2806	3367	4208	5050	5611	6172	7014	7575	8136	8697
350	3464	4156	5195	6235	6927	7620	8659	9352	10045	10737
400	4524	5429	6786	8143	9048	9953	11310	12215	13119	14024

Oil Mist System Components

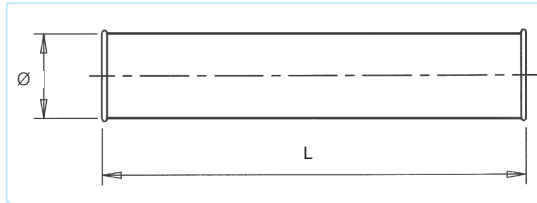
- Laser welded straight duct
- Oil Mist Gaskets on duct ends where joined
- Caulked seams / joins on other components
- Oil Mist Slip Duct Kit where variable lengths needed
- Oil Mist Drain and / or Ball Joint where needed
- QFS Dampers



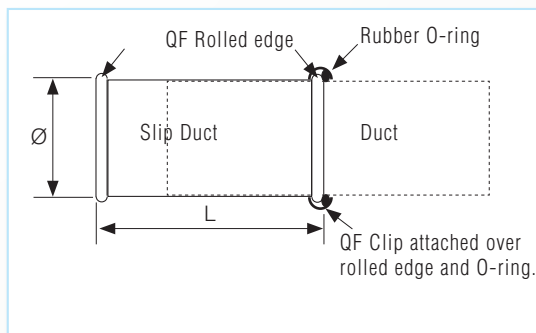
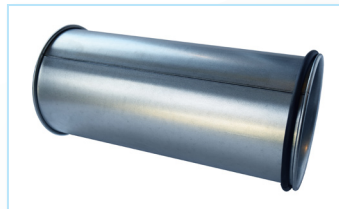
QF Duct Welded seam

Ø mm	Item no.	L mm	T mm	Weight kg
080	8210000885	1478	0,7	2,4
100	8210000886	1478	0,7	2,6
125	8210000887	1478	0,7	3,2
140	8210000888	1478	0,7	3,6
150	8210000889	1478	0,7	3,8
160	8210000890	1478	0,7	4,1
180	8210000891	1471	0,7	4,6
200	8210000892	1471	0,7	5,2
224	8210000893	1471	0,7	5,8
250	8210000894	1471	0,7	6,5
300	8210000895	1462	0,7	7,7
315	8210000896	1462	0,7	8,1
350	8210000897	1462	0,7	9,0
400	8210000898	1462	0,9	13,3

ORDER EXAMPLE:
Duct W Galv 0,7mm 300QF L=1,5m



ORDER EXAMPLE:
Slip Duct w/O-ring QFS Galv 0,7mm
224QF



QF Slip Duct Welded seam

Ø mm	Item no.	L mm	Thickness mm	Weight kg
080	8210001238	278	0,7	0,5
100	8210001239	278	0,7	0,6
125	8210001240	278	0,7	0,7
140	8210001241	278	0,7	0,8
150	8210001242	278	0,7	0,9
160	8210001243	278	0,7	0,9
180	8210001244	271	0,7	1,0
200	8210001245	271	0,7	1,2
224	8210001246	271	0,7	1,3
250	8210001247	271	0,7	1,4
300	8210001248	262	0,7	1,7
315	8210001249	262	0,7	1,8
350	8210001250	262	0,7	2,0
400	8210001251	262	0,9	2,9

QFS Slip Duct in the Sealed version includes,

- 1 Slip Duct dim. Ø XXX
- 1 pcs. QFS Clip
- 2 pcs. O-rings
- 1 Duct End Gasket

QFS Premium Clip and Duct End Gasket Kit

Ø mm	Item no.	Weight kg
80	8210000712	0,11
100	8210000713	0,12
125	8210000714	0,14
140	8210000715	0,15
150	8210000716	0,19
160	8210000717	0,24
180	8210000718	0,27
200	8210000719	0,28
224	8210000720	0,30
250	8210000721	0,32
300	8210000722	0,59
315	8210000723	0,63
350	8210000724	0,69
400	8210000725	0,72

ORDER EXAMPLE:
Clip P QFS Galv 100QF Kit
With Gasket



ORDER EXAMPLE:
Gasket for Slip Duct QFS EPDM 160

Duct End Gasket

Ø mm	Gasket Only Item no.	Weight kg
80	8210001661	0,01
100	8210001662	0,01
125	8210001663	0,01
140	8210001664	0,02
150	8210001665	0,02
160	8210001666	0,02
180	8210001667	0,03
200	8210001668	0,04
224	8210001669	0,04
250	8210001670	0,05
300	8210001671	0,08
315	8210001672	0,09
350	8210001673	0,10
400	8210001674	0,12

Technical Data: EPDM

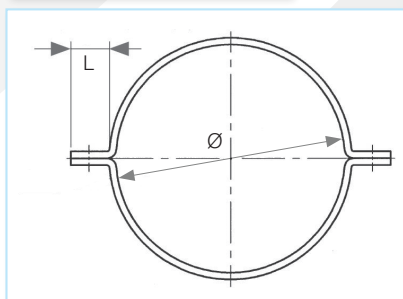
- General purpose oil resistant polymer
- Performs well with many oil, water and hydraulic fluid applications
- Good tear resistance
- Should not be used with solvents such as acetone, MEK, ozone, chlorinated hydrocarbons, and nitro hydrocarbons
- Conducts electricity
- Classification: 1. ASTM D-2000 M2BG510 A24 B34 E014 E034 EF11 EF21
- Temperature range: -34° C to +107° C / intermittent: +138° C

KVDA Split Strap

Ø	Item no.	L	T
80	8210001108	25	3
100	8210001109	25	3
125	8210001111	25	3
140	8210001112	25	3
150	8210001113	25	3
160	8210001114	25	3
180	8210001115	25	3
200	8210001116	25	3
224	8210001117	25	3
250	8210001118	25	3
300	8210001120	30	3
315	8210001121	30	3
350	8210001123	30	3
400	8210001124	30	3
450	8210001125	30	3
500	8210001126	30	3
560	8210001295	40	5
630	8210001296	40	5
710	8210001297	40	5
800	8210001298	40	5
900	8210001299	40	5
1000	8210001300	40	5



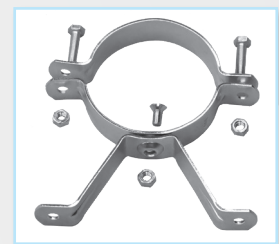
ORDER EXAMPLE:
KVDA Split Strap
Mild Steel 5mm
560mm



KVDD Legs for Split Strap

Ø
80 160
180 315
350
400

Galvanised
25 x 2.0 mm.
Incl. bolt and nut.





To minimize leakage, joints are sealed using a 2-pac epoxy.

QFS Pressed Bends (long radius)

R=1,5 x diameter to centreline

ORDER EXAMPLE:
Bend Pressed QFS Galv 0,9mm 250QF 45Deg R=1,5

90° Pressed Bends

Ø mm	Item no.	R mm	Thickness mm	Weight kg
080	8210000238	120	0,9	0,4
100	8210000243	150		0,5
125	8210000248	190		0,8
140	8210000253	210		0,9
150	8210000258	225		1,1
160	8210000263	240		1,2
180	8210000268	270		1,6
200	8210000273	300		1,9
224	8210000278	337		2,4
250	8210000283	375		3,0
300	8210000288	450		4,0
315	8210000293	472,5		5,0

60° Pressed Bends

Ø mm	Item no.	R mm	Thickness mm	Weight kg
080	8210000237	120	0,9	0,3
100	8210000242	150		0,4
125	8210000247	190		0,6
140	8210000252	210		0,6
150	8210000257	225		0,7
160	8210000262	240		0,8
180	8210000267	270		1,2
200	8210000272	300		1,3
224	8210000277	337		1,7
250	8210000282	375		1,9
300	8210000287	450		2,4
315	8210000292	472,5		2,5

45° Pressed Bends

Ø mm	Item no.	R mm	Thickness mm	Weight kg
080	8210000236	120	0,9	0,2
100	8210000241	150		0,3
125	8210000246	190		0,4
140	8210000251	210		0,4
150	8210000256	225		0,5
160	8210000261	240		0,6
180	8210000266	270		0,9
200	8210000271	300		1,0
224	8210000276	337		1,6
250	8210000281	375		1,6
300	8210000286	450		2,3
315	8210000291	472,5		2,4

30° Pressed Bends

Ø mm	Item no.	R mm	Thickness mm	Weight kg
080	8210000235	120	0,9	0,2
100	8210000240	150		0,3
125	8210000245	190		0,3
140	8210000250	210		0,4
150	8210000255	225		0,5
160	8210000260	240		0,5
180	8210000265	270		0,7
200	8210000270	300		0,9
224	8210000275	337		1,3
250	8210000280	375		1,5
300	8210000285	450		2,2
315	8210000290	472,5		2,2

15° Pressed Bends

Ø mm	Item no.	R mm	Thickness mm	Weight kg
080	8210000234	120	0,9	0,1
100	8210000239	150		0,2
125	8210000244	190		0,4
140	8210000249	210		0,4
150	8210000254	225		0,4
160	8210000259	240		0,4
180	8210000264	270		0,5
200	8210000269	300		0,7
224	8210000274	337		0,9
250	8210000279	375		0,9
300	8210000284	450		1,0
315	8210000289	472,5		1,0



ORDER EXAMPLE:
Bend Seg QFS Galv 0,7mm 350QF 45Deg R=1,5

QFS Segmented Bends

R = 1.5 x diameter to centreline

Custom radiuses available on request.

60° Segmented bends

Ø mm	Item no.	R mm	Thickness mm	Weight kg
350	8210000674	525	0,7	4,8
400	8210000679	600	0,7	6,3

30° Segmented bends

Ø mm	Item no.	R mm	Thickness mm	Weight kg
350	8210000672	525	0,7	2,9
400	8210000677	600	0,7	3,8

90° Segmented bends

Ø mm	Item no.	R mm	Thickness mm	Weight kg
350	8210000675	525	0,7	6,8
400	8210000680	600	0,7	8,8

45° Segmented bends

Ø mm	Item no.	R mm	Thickness mm	Weight kg
350	8210000673	525	0,7	3,8
400	8210000677	600	0,7	5,1

15° Segmented bends

Ø mm	Item no.	R mm	Thickness mm	Weight kg
350	821000071	525	0,7	2,9
400	821000076	600	0,7	3,8

QFS Branch Standard

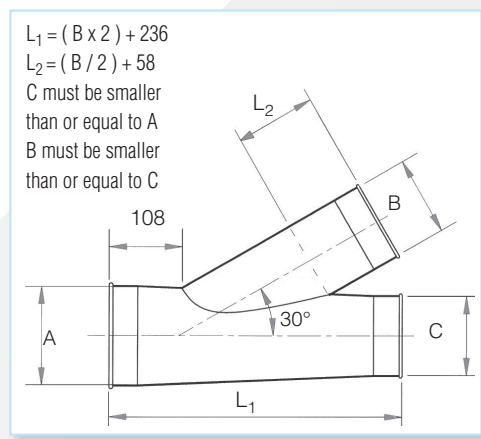
Ø A mm	Item no.	T mm
080		0,7
100		0,7
125		0,7
140		0,7
150		0,7
160		0,7
180		0,7
200		0,7
224	Order Branches by description or visit our website for current item codes	0,7
250		0,7
300		0,7
315		0,7
350		0,7
400		0,9
450		0,9
500		0,9
560		0,9
630		0,9
710	0,9	



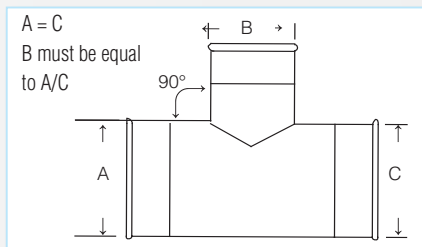
ORDER EXAMPLE:
Branch Std QFS Galv 0,7mm 140QF 80QF 80QF 30deg

All branches may be ordered by description. For example, Branch Std Galv AQFS BQFS CQFS with A, B, and C dimensions replaced by the size required:

ORDER EXAMPLE:
Branch Std Galv 150QFS 80QFS 100QFS



ORDER EXAMPLE:
Branch Tee QFS Galv 0,7mm 180QF 100QF



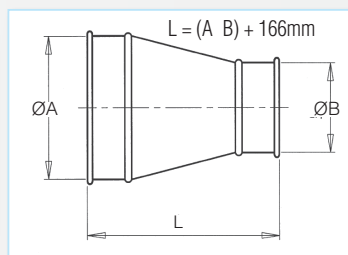
QFS T-Branch

ØA mm	Item no.	T mm
80		0,7
100		0,7
125		0,7
140		0,7
150		0,7
160		0,7
180		0,7
200	Order T-Branches by description or visit our website for current item codes	0,7
224		0,7
250		0,7
300		0,7
315		0,7
350		0,7
400		0,9

QFS Reducer

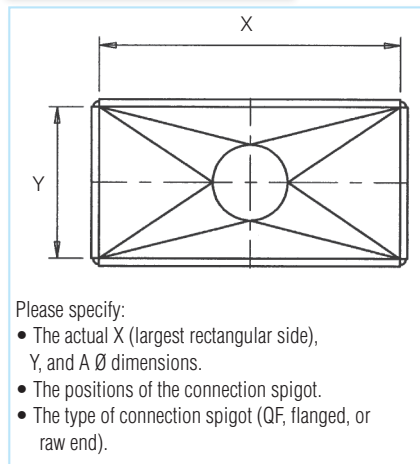
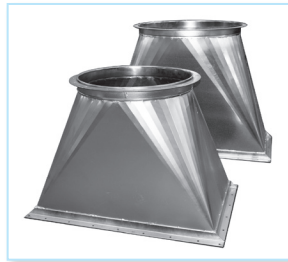
ØA mm	Item no.	Thickness mm
100	Order Reducers by description or visit our website for current item code	0,9
125		0,9
140		0,9
150		0,9
160		0,9
180		0,9
200		0,9
224		0,9
250		0,9
300		0,9
315		0,9
350		0,9
400		0,9
450		0,9
500		0,9
560		0,9
630	0,9	
710	0,9	

ORDER EXAMPLE:
Reducer QFS Galv 0,7mm 224QF 125QF



Transition from rectangular to round

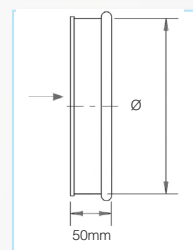
ØA mm	Item no.	T mm
100	Order Transitions by description	0,9
125		0,9
140		0,9
150		0,9
160		0,9
180		0,9
200		0,9
224		0,9
250		0,9
300		0,9
315		0,9
350		0,9
400		0,9



QFS End Cap

Ø mm	Item no.	T mm	Weight kg
080	8210001050	0,7	0,09
100	8210001051	0,7	0,13
125	8210001052	0,7	0,18
140	8210001053	0,7	0,22
150	8210001054	0,7	0,24
160	8210001055	0,7	0,26
180	8210001056	0,7	0,35
200	8210001057	0,7	0,40
224	8210001058	0,7	0,49
250	8210001059	0,7	0,62
300	8210001060	0,7	0,88
315	8210001061	0,7	1,15
350	8210001062	0,7	1,60
400	8210001063	0,9	2,12

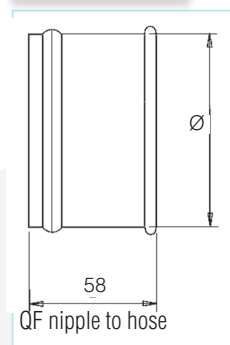
ORDER EXAMPLE:
End Cap QFS Galv 0,7mm 150QF



QF Hose Adapter

Ø mm	Item no.
080	8210000019
100	8210000020
125	8210000021
140	8210000022
150	8210000023
160	8210000024
180	8210000025
200	8210000026
224	8210000027
250	8210000028
300	8210000029
315	8210000030
350	8210000031
400	8210000032
450	8210000033
500	8210000034
560	8210000035
630	8210000036
710	8210000037

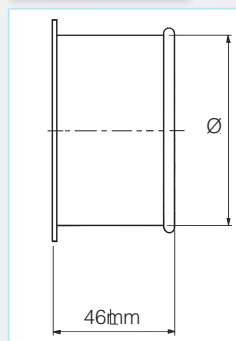
ORDER EXAMPLE:
Adapter Hose Galv 0,9mm 710QF



QF Tabular rivet Adapter

Ø mm	Item no.
080	8210000049
100	8210000050
125	8210000051
140	8210000052
150	8210000053
160	8210000054
180	8210000055
200	8210000056
224	8210000057
250	8210000058
300	8210000059
315	8210000060
350	8210000061
400	8210000062
450	8210000063
500	8210000064
560	8210000065
630	8210000066
710	8210000067

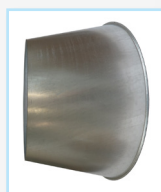
ORDER EXAMPLE:
Adapter Rivet Galv 0,9mm 450QF



QF Step Edge Adapter

Ø mm	Item no.
080	8210000087
100	8210000088
125	8210000089
140	8210000090
150	8210000091
160	8210000092
180	8210000093
200	8210000094
224	8210000095
250	8210000096
300	8210000097
315	8210000098
350	8210000099
400	8210000100
450	8210000101
500	8210000102
560	8210000103
630	8210000104
710	8210000105

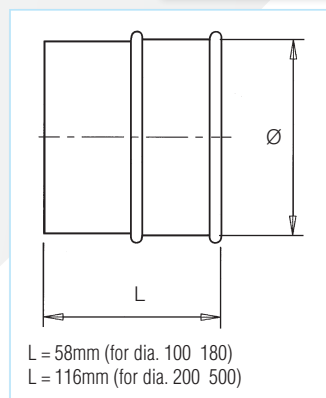
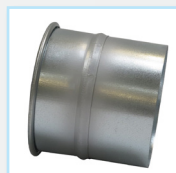
ORDER EXAMPLE:
Adapter Step Edge Galv
0,7mm 250QF



ORDER EXAMPLE:
Adapter Ventilation
QFS Galv 0,9mm
400QF

QFS Ventilation adapter

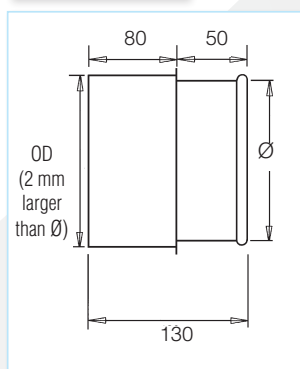
Ø mm	Item no.
080	8210000125
100	8210000126
125	8210000127
140	8210000128
150	8210000129
160	8210000130
180	8210000131
200	8210000132
224	8210000133
250	8210000134
300	8210000135
315	8210000136
350	8210000137
400	8210000138



QFS Machine Adapter Expanded

Ø mm	Item no.
080	8210000038
100	8210000039
125	8210000040
140	8210000041
150	8210000042
160	8210000043
180	8210000044
200	8210000045
224	8210000046
250	8210000047
300	8210000048

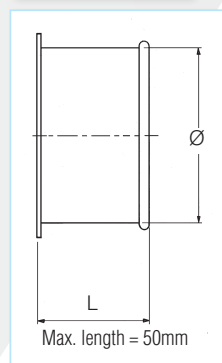
ORDER EXAMPLE:
Adapter Machine Expanded QFS Galv
0,7mm 224QF L=130mm



QF Transition piece

Ø mm	Item no.
080	8210001820
100	8210001821
125	8210001822
140	8210001823
150	8210001824
160	8210001825
180	8210001826
200	8210001827
224	8210001828
250	8210001829
300	8210001830
315	8210001831
350	8210001832
400	8210001833
450	8210001834
500	8210001835
630	8210001836

ORDER EXAMPLE:
Adapter Nipple QF to FB Galv 0,9mm
630QF 630FB





FLEX Hose

Polyurethane hose with embedded steel helix.

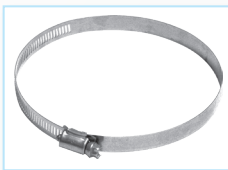
Available in 1 meter lengths

ORDER EXAMPLE:
Flex Hose 203mm 8In Clear PU

Ø mm	Item no.	Thickness mm	Weight gr/mtr
38	8604003038	0.5	166
51	8604003051	0.55	260
63	8604003063	0.55	320
76	8604003076	0.6	440
82	8604003082	0.6	490
89	8604003089	0.6	520
102	8604003102	0.65	660
127	8604003127	0.65	800
140	8604003140	0.65	900
152	8604003152	0.7	1100
160	8604003160	0.7	1160
180	8604003178	0.7	1300
203	8604003203	0.7	1440
229	8604003229	0.7	1580
254	8604003254	0.8	1880
305	8604003305	0.8	2250
315	8604003315	0.8	2390

ORDER EXAMPLE:
Mikalor Clip 63mm Nb 60-80mm Range

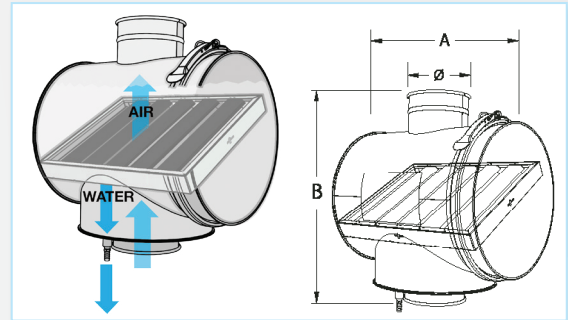
Mikalor Hose Clip



Ø mm	Item no.	Hose size
32-50	8604004038	38
40-60	8604004051	51
60-80	8604004063	63
70-90	8604004076	76
70-90	8604004076	82
80-100	8604004089	89
90-110	8604004102	102
120-140	8604004127	127
130-150	8604004140	140
140-160	8604004152	152
150-170	8604004160	160
170-190	8604004180	180
200-220	8604004203	203
230-250	8604004229	229
260-280	8604004254	254
258-355	8604004305	305
258-355	8604004305	315

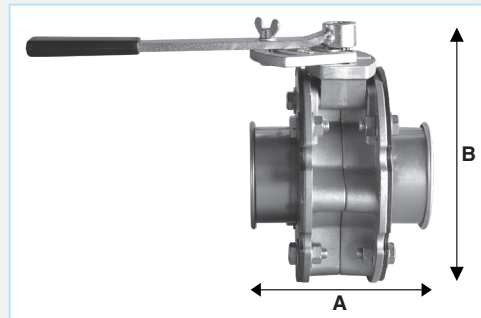
Oil Mist Drain

Ø mm	Item no.	A mm	B mm	Baffle Size mm	Thickness mm
80	8210001134	385	450	370 x 240	0,9
100	8210001135	385	450	370 x 240	0,9
125	8210001136	385	450	370 x 240	0,9
140	8210001137	385	450	370 x 240	0,9
150	8210001138	385	450	370 x 240	0,9
160	8210001139	525	600	513 x 385	0,9
180	8210001140	525	600	513 x 385	0,9
200	8210001141	525	600	513 x 385	0,9
224	8210001142	525	600	513 x 385	0,9
250	8210001143	525	600	513 x 385	0,9
300	8210001144	635	700	625 x 488	0,9
315	8210001145	635	700	625 x 488	0,9
350	8210001146	635	700	625 x 488	0,9
400	8210001147	635	700	625 x 488	0,9



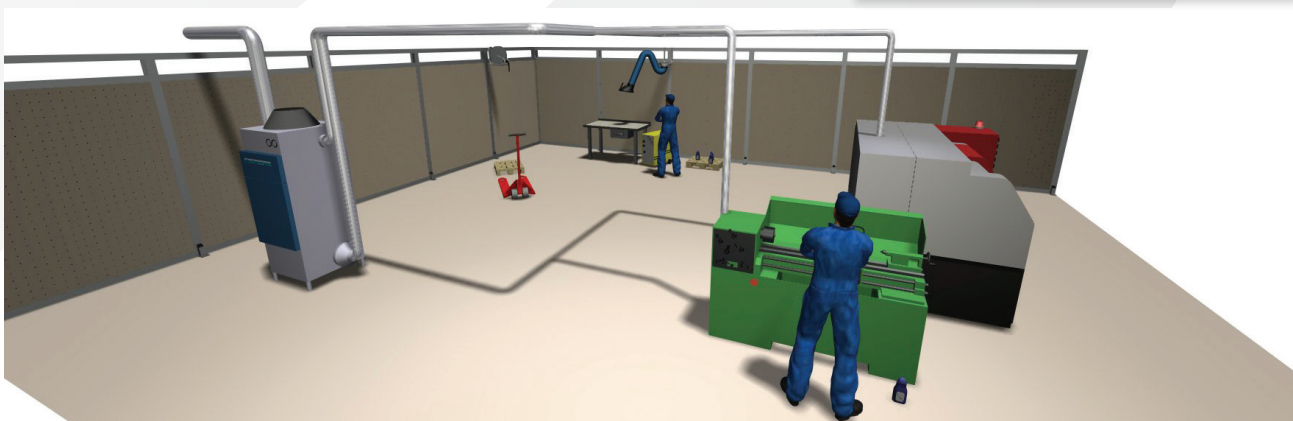
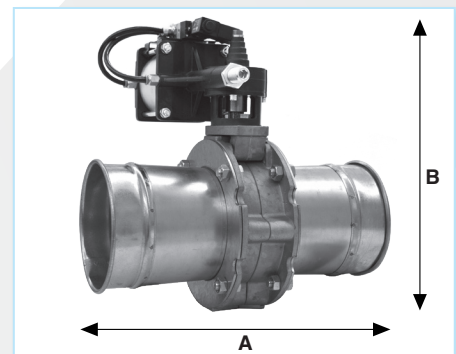
QFS Manual Damper

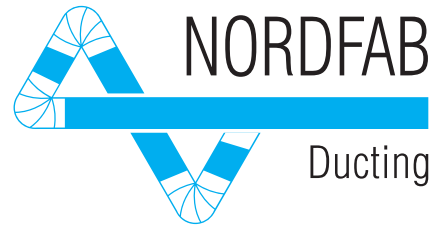
Ø mm	Item no.	A mm	B mm	Weight kg
100	8210000805	185	250	6
160	8210003389	385	290	7
200	8210000807	185	340	9
250	8210000808	185	390	10
300	8210000809	185	440	10
350	8210000810	485	440	11,5
400	8210000811	485	440	11,5



QFS Automatic Damper

Ø mm	Item no.	A mm	B mm	Weight kg
100	8210000798	185	390	7,5
160	8210003390	385	430	8,5
200	8210000800	185	480	10,5
250	8210000801	185	530	11,5
300	8210000802	185	580	11,5
350	8210000803	485	580	13
400	8210000804	485	580	13





General Conditions of Sale

Shipping and Packaging

An additional charge for shipping and packaging may be applied.

Delivery Times

Three days on stocked parts.

For components that are made to order, delivery times may vary.

Upon Receipt of Delivery

Please check the number of packages and that all components are intact before signing the delivery note.

If you are not completely satisfied with your order, please contact us.

Phone: +44 (0) 1132 739 400

Email: sales@nordfabducting.co.uk

Conditions for Returning Goods

Please contact us before returning goods. email sales@nordfabducting.co.uk or phone +44 (0) 1132 739 400.

When returning goods, please enclose a copy of the original invoice or delivery note. Returns without agreement and/or attached documents will not be credited.

Un-damaged standard items should be returned in original packaging. 25% re-stocking charge applies.

Delivery charges for returned items are to be paid by the customer.

Price, reservation and technological changes

We reserve the right to change our prices at any time. To ensure you have the latest prices, please check our website www.nordfabducting.co.uk.

Product Documentation

For product documentation eg. operating and maintenance documents, please visit our website:

www.nordfabducting.co.uk.

Hours of Operation

Office hours: 0800-1700

Deliveries & collections:

0830-1600 Mon-Thurs

0830-1400 Fri.